

- COMPLETED COMPANY CONTRACTS
- COMPLETED INDIVIDUAL CONTRACTS
- ON-GOING COMPANY ASSIGNMENTS
- ON-GOING INDIVIDUAL ASSIGNMENTS
- TI SIERRA LEONE
- CONFERENCES AND TRAININGS IN 2020
- HR UPDATES

@TI/Teun Voeten

Our newsletter aims to update our network of partners, associates, selected clients and friends, about TI's ongoing work in the world, and the achievements we have accomplished in 2020. Despite the outbreak of the global pandemic, we have worked with continuous commitment towards the changes we are aiming to foster in the world. From our Netherlands-based team, we would like to take this opportunity to thank all of those who have supported TI, allowing our impact to expand further. We would like to wish all of you a bright and happy 2021.

Dutch Ministry of Foreign Affairs – Mali

TI, in partnership with TRANSTEC, conducted an evaluation to assess the Strengthening Value Chains of Onions and Fish Programme, which aims to support two strategic sectors due to their economic importance and their contribution, to the Mali’s food and nutritional security.

The international consultants involved: Irma Specht & TRANSTEC consultants Pierre Failler, Salif Foulani Sissoko

WAR CHILD – Democratic Republic of Congo

TI designed a new global reintegration model for Children Associated with Armed Forces and Armed Groups (CAAFAG), based on TI’s Community Based Reintegration and Security (CBRS) model, adapted to the needs of children and War Child UKs priorities. Consequently, TI provided support to a CBRS pilot in DRC by providing training and design the ICRS database (expanded case management).

The international consultants involved: Irma Specht, Fatuma Ibrahim, Tim Peute

IOM - Iraq

TI undertook an assessment on the drivers of militarisation and development of project strategy and targeting tools, which focused on the reduction of militarisation in Tal Afar, Iraq.

The international consultants involved: *Irma Specht, Habib el Mrabt & Tim Peute*

NETHERLANDS EMBASSY - Mozambique

TI, in partnership with TRANSTEC, conducted an evaluation to assess the AIAS programme, which aims to manage the water and sanitation infrastructure and to enable and support operators in (secondary) urban water supply and sanitation systems.

The international consultants involved: TRANSTEC consultants Marco Visser, Gabriel Regallet, and for TI, Augusto Razulo, Ricardo Maria Jose & Lina Gonzales

Department for International Development – Democratic Republic of Congo

TI undertook two context and conflict analyses to scope and design potential programmatic responses in relation to the self-demobilised or surrendered combatants, and their wider communities in the Kasai and Tanganyika in DRC. The design work will inform DFID’s next call for proposals and programming priorities, and further inform MONUSCO and other actors.

The international consultants involved: Irma Specht, Khaled Ibrahim & Julien Daviet

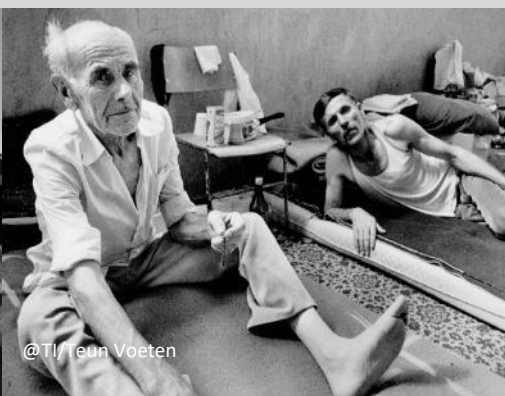
DANISH REFUGEE COUNCIL - Iraq

Gender analysis of economic empowerment programming on household and community dynamics in rural and urban areas of Ninewa and Salah Al Din governorates.

The international consultants involved: Luisa Dietrich, Rohlat Khaleel, Tim Peute



@TI/Teun Voeten



@TI/Teun Voeten



@TI/Teun Voeten

Irma Specht, Luc Lafrenière**UNDP - Mauritania**

Conducted a conflict analysis on the border areas between Mauritania and Mali, and based on this, designed a project to inform PBF funding and EU funding.

Habib El Mrabt**IOM – Iraq**

Developed and undertook an analysis and developed a response strategy targeting in-camp populations and returnees to address the drivers of conflict and structural motivators, individual incentives, and enabling factors which contribute to increased risk of recruitment into violent extremist groups, under an Iraq/ISIS lenses, with a focus on displaced populations from, and returnees, in Salah al Din, Iraq.

Tim Peute**IOM - Iraq**

Conducted a baseline study for IOM Iraq, concerning a project that aimed to enhance social cohesion and improve the security situation in Ninewa, Iraq. The study also sought to analyse the link between security and development.

Luisa Dietrich**JUSTICE RAPID RESPONSE (JRR) - Geneva**

Supported Women's Rights, Feminist and LGBT organisations (Alliance) representing survivors of Conflict Related Sexual Violence (CRSV) before the Special Jurisdiction for Peace, JEP.

BERGHOF FOUNDATION

Developed a policy paper on lessons learned from reintegration of war-affected groups and cross-cutting issues.

OXFAM – Iraq

Provided advise to the exploratory study into Social Norms and Masculinities in Kirkuk and Diyala, development of edutainment toolbox, and training of trainers.

Pall Davidsson**UNDP - Cameroon**

Developed the policy on UNDP's engagement with vigilantes, with a view to reinforce their vital role in providing security and combating violent extremism, while mitigating the risks associated with such engagement.



@TI/Teun Voeten



@TI/Teun Voeten



@TI/Teun Voeten

UNDP RULE OF LAW AND HUMAN RIGHTS GLOBAL PROGRAMME

Conducted a technical and thematic review of Social and Economic Response Plans to Covid-19 developed by the United Nations Country Teams in Africa, the Caribbean and in Asia, to assess the consideration given to governance, rule of law, human rights and peacebuilding. Drafted a qualitative and quantitative analysis of the interventions planned, capacity needs and thematic gaps.

Irma Specht

WFP – Democratic Republic of Congo

TI, supported WFP, FAO and UNICEF, and the Ministry of Social Affairs (MINAS) with a conflict scan in the Kinshasa neighbourhood Nsele. The analyses meant to ensure that the modalities of cash-transfer assistance to vulnerable populations will be conflict sensitive.

The international consultants involved: Irma Specht & Pieter Dorst

UNDP - South Sudan

As a team leader, designed and undertook a baseline survey and assessments for the reintegration of the ex-combatant with the Disarmament Demobilisation and Reintegration (DDR) Commission in South Sudan, covering all States and approximately 20.000 respondents.

The international consultant involved: Irma Specht

Mark van Dorp

IOM - Iraq

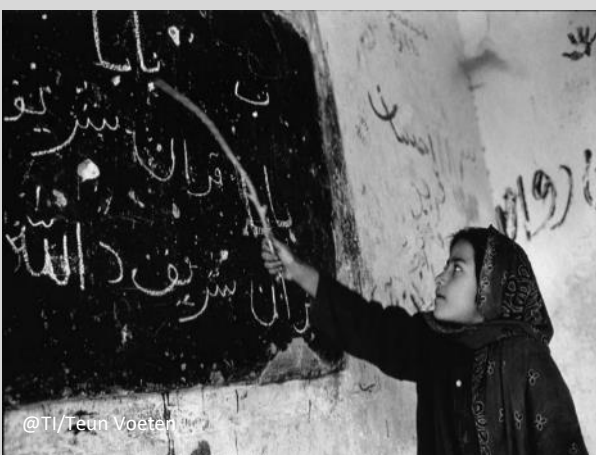
Conducted a rapid market assessment on the identification of economic opportunities for agribusinesses based on value-chain analysis.

Pieter Dorst

MDF INSTITUTE FOR SOCIAL STUDIES

Undertook an evaluation on the platform for discussions on NGO development effectiveness and CSO enabling environment for the Management for Development Foundation (MDF).

The international consultant involved: Pieter Dorst



@TI/Teun Voeten



@TI/Teun Voeten



@TI/Teun Voeten

UNDP - Sudan

Evaluation of UNDP's Community Security and Stabilisation (C2SP) programme, in partnership with Sudia.

The international consultant involved: Irma Specht

BERGHOF FOUNDATION

Mid-term and end line evaluation strengthening women in Resistance and Liberation Movements (RLM) in negotiation and post-conflict leadership skills.

The international consultants involved: Luisa Dietrich

FBA – Ukraine

Mapping of challenges and opportunities for the reintegration of veterans for the (FBA).

The international consultants involved: Irma Specht, Julien Daviet & Ibrahim Sinan

MFA - EVALUATION ON THE GOVERNANCE OF DUTCH NATIONAL SDG IMPLEMENTATION - Netherlands

Evaluation of the Netherlands' national Sustainable Development Goals implementation, with a focus on the governance structure and collaboration between stakeholders.

The consultants involved: Franke Toornstra & Mark van Dorp

IGAD – Somalia

Support the IGAD Special Mission to Somalia to undertake a baseline assessment, a conflict sensitivity analysis and developing strategies for mainstreaming cross-cutting issues for its project: "Support to Effective Peace Building and State Building in Somalia".

The international consultants involved: Irma Specht, Patrick Loots, Lina Gonzalez, Ibrahim Bangura and Ibrahim Sinan

FAO - Global

TI is supporting the Office of Evaluation (OED) of the United Nations Food and Agriculture Organisation (FAO) in conducting the final evaluations of eight projects financed by the UN Secretary General's Peacebuilding Fund (PBF) in Sierra Leone, Yemen, Niger, Chad, Central African Republic and Gambia. TI is designing an overarching evaluative framework which will guide the 8 individual evaluations and also build the evidence-base for conflict-sensitive programming in areas related to food security, agriculture and natural resource management (NRM); evaluative learning on pathways contributing to local peace; and ensure that overall findings and lessons are captured and synthesized from the different PBF project evaluations for future programmes and projects of FAO and partner agencies.

The international consultants involved: Irma Specht, Ibrahim Sinan, Luc Lafreniere

OXFAM GB

Conducted an exploratory study into the feasibility of a reparations fund for survivors of safeguarding incidents perpetrated by aid workers.

The international consultant involved: Luisa Dietrich

WOMEN'S INTERNATIONAL LEAGUE FOR PEACE AND FREEDOM

Mid-term review of the Growing the Feminist Movement for Peace in the MENA region.

The international consultant involved: Luisa Dietrich

SAVE THE CHILDREN INTERNATIONAL - Nigeria

Conducted a conflict analysis study in Borno and Yobe States.

UNDP - Sierra Leone

Developed a four-year Rule of Law Programme Document (2020-2023) for the Rule of Law Cluster of UNDP. The programme document will guide UNDP's interventions in the security and justice sectors in Sierra Leone.

UNDP/HUMAN RIGHTS COMMISSION OF SIERRA LEONE – Sierra Leone

Developed the strategic plan of the Human Rights Commission of Sierra Leone 2021-2025.

CREATIVE – NERI – Nigeria

Phase 2:

TI, in collaboration with NERI, successfully completed Phase 2 of the project in 2020, which aimed to build the capacity of the CVE Center. TI provided technical support through capacity building training on VE research for staff and associates of the Centre for Study of Violent Extremism (CSVE), (2) supported CSVE to undertake development of research proposal and implementation of a research on the impact of Violent Extremism on Women and Children in Borno and Yobe States, (3) provided support in developing a Resource Mobilization and Communications plan and (4) facilitated a regional roundtable for key stakeholders.

The international consultants involved: Ibrahim Bangura, Habib El Mrbat, Henry Mbawa & Temitope Oriola



@TI/Teun Voeten



@TI/Irma Specht



@TI/Teun Voeten

FOLKE BERNADOTTE ACADEMY– Democratic Republic of Congo

Designed and implemented two workshops with the objective to build capacity of local actors in two neighbourhoods of Goma, to design their Community Based Reintegration (CBR) priorities, and to provide an introduction into the broader concept of Community Based Reintegration and Security.

The international consultants involved: Irma Specht, Julien Daviet

THE HAGUE ACADEMY FOR LOCAL GOVERNANCE

Designed and delivered a module on Local Economic and Social development (LESD) in conflict and fragile countries, and 3 modules in ROL course.

The international consultant involved: Irma Specht

HIS Framework

TI has succeeded to win the second phase of the four- year Dutch HIS Framework Agreement under Lot 1 (Qualitative Effect Evaluations), together with TRANSTEC.

RVO

TI has succeeded to win the Netherlands Enterprise Agency (RVO) Lot 1 (Evaluations of International Programs), together with TRANSTEC, a four-year framework contract with the Dutch Ministry of Economic Affairs and Climate Policy.

Altair Asesores

TI has succeeded to be part of the Consortium led by Altair Asesores, a temporary association for the supply of short-term expertise in the sectors for external aid projects launched under the EU LOT 3 – Human rights, Democracy and Peace.

TI – Democratic Republic of Congo

TI is also setting up TI-DRC, that will be registered as a Congolese NGO, facilitating our extensive work in the country.

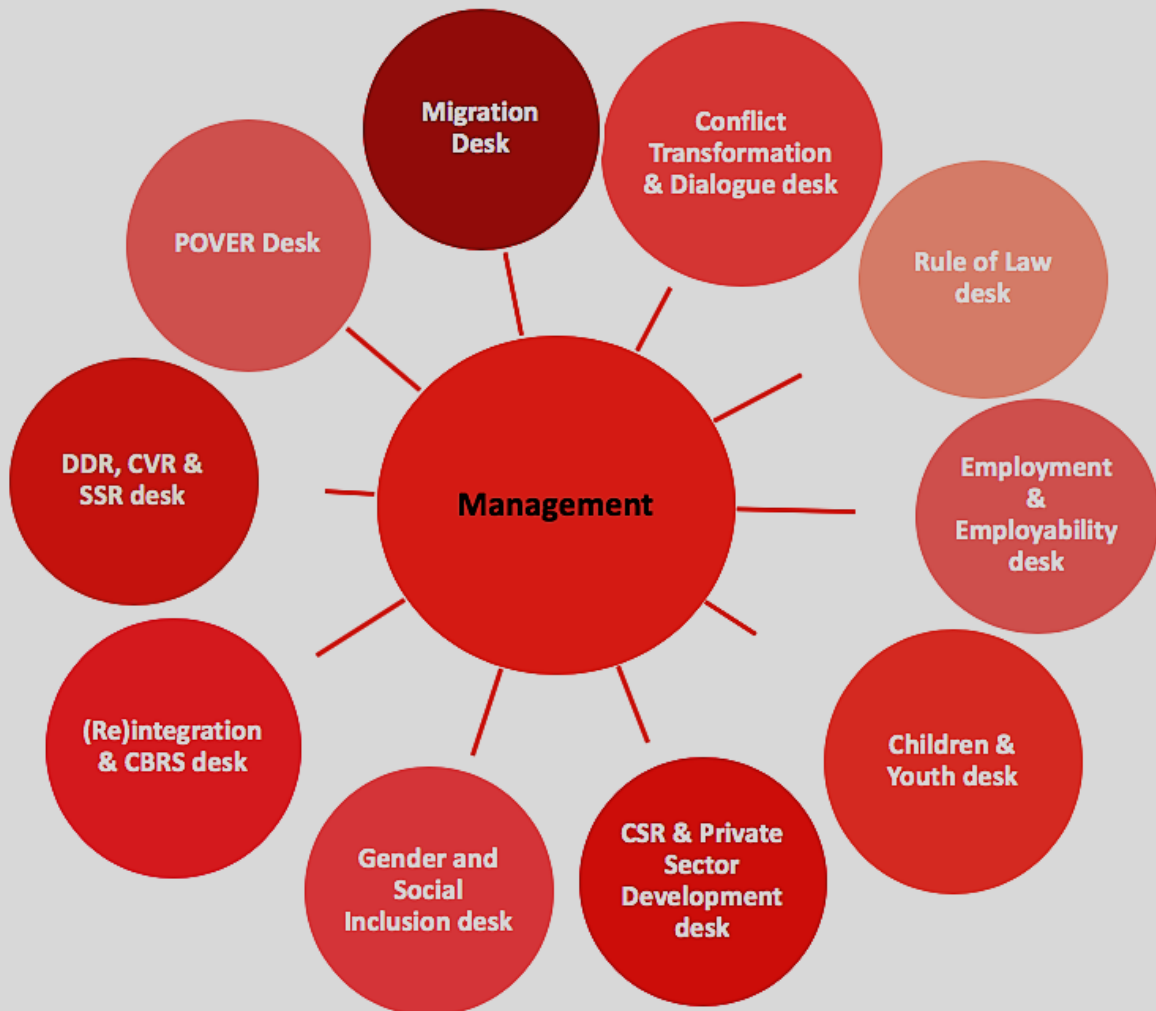
The overview below outlines the current core-staff of TI supported by interns and our network of 46 associates.

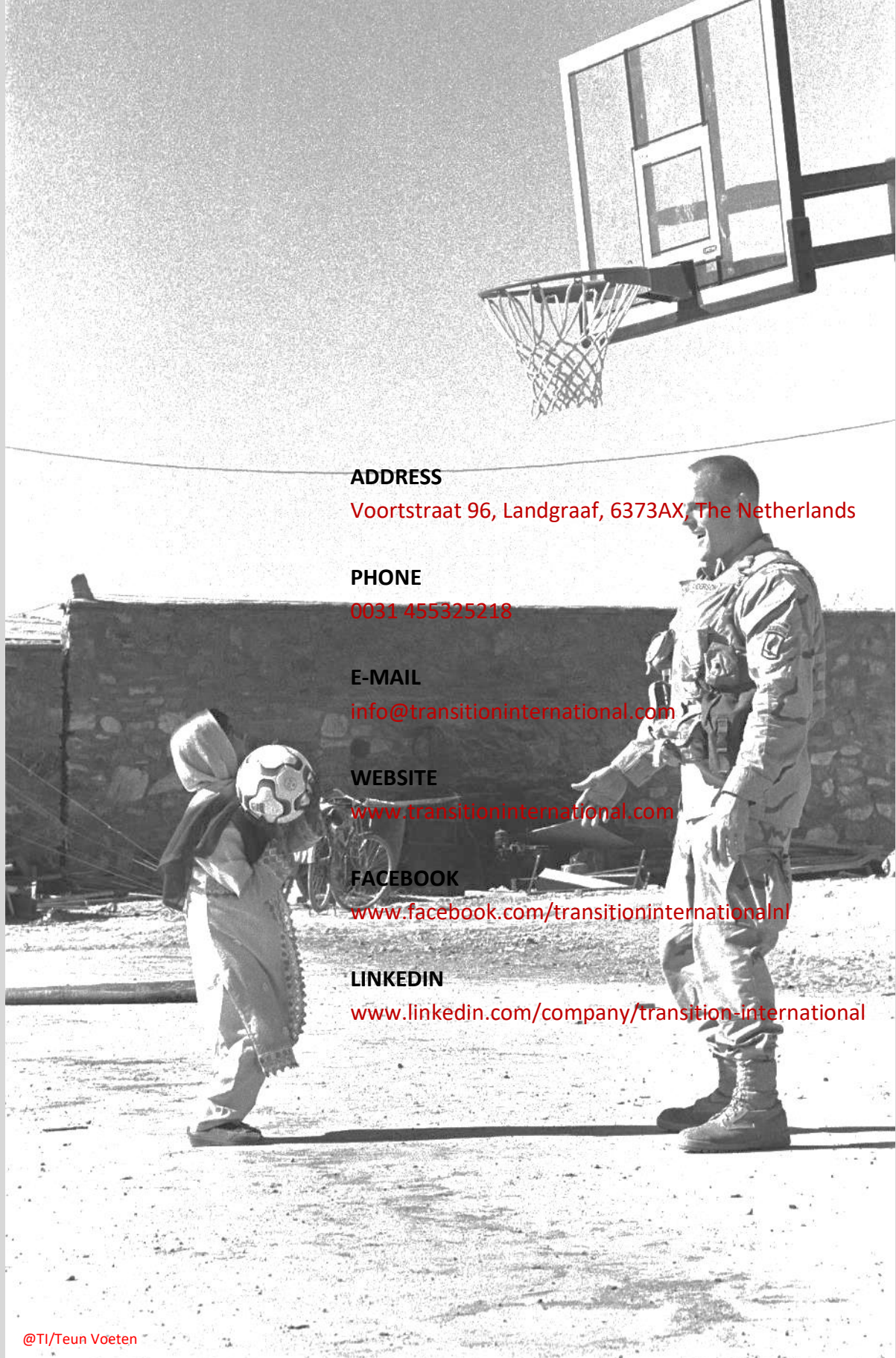
TI NL staff

- Irma Specht – Director TI & Part-time manager
- Ibrahim Khalil Sinan – Research and Programme Manager Assistant
- Rudolf Keijzer – Financial Controller
- Korak Specht – Finance Officer
- Farai Specht – Social Media and infographics designer
- Kim Haratian – Operations Manager
- Martijn Seerden – Bookkeeping

Partners and Desks

- Irma Specht – CSR and Private Sector Development Desk, Conflict Transformation and dialogue, DDR & CVR & SSR desk, Migration Desk, Reintegration & CBRS Desk
- Luisa Dietrich – Gender and Social Inclusion Desk
- Ibrahim Bangura – TI Sierra Leone
- Pieter Dorst – Economic Recovery and Employment Desk
- Habib el Mrabt – POVER Desk
- Pall A. Davidsson – Rule of Law Desk





ADDRESS

Voortstraat 96, Landgraaf, 6373AX, The Netherlands

PHONE

0031 455325218

E-MAIL

info@transitioninternational.com

WEBSITE

www.transitioninternational.com

FACEBOOK

www.facebook.com/transitioninternationalnl

LINKEDIN

www.linkedin.com/company/transition-international

@TI/Teun Voeten

